

MOD HEX100



Light Efficiency:

39 Lumen/Watt

Light Quality:

CRI: 76.4

Color Temperature:

7740 K

Output: 869 lm

Peak: 1482 cd

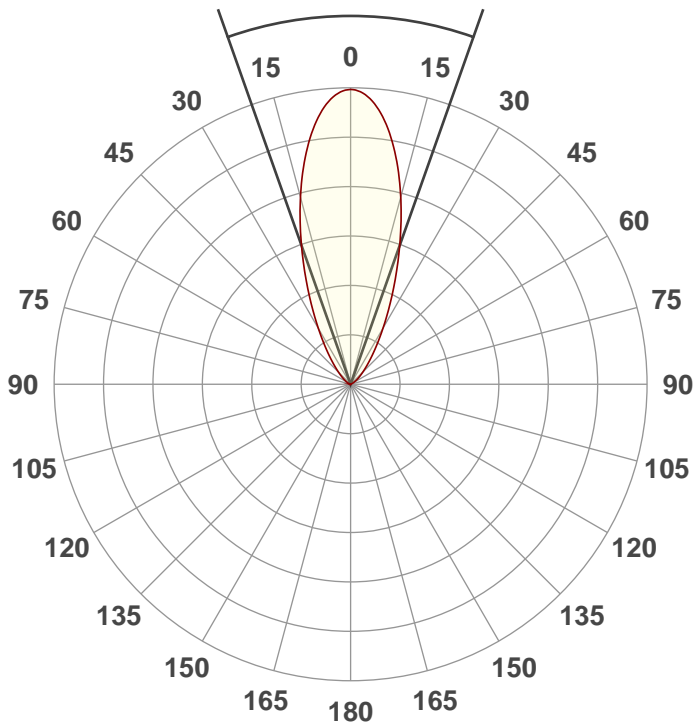
Power: 22.3 W

PF: 0.55



Beam Angle

39°



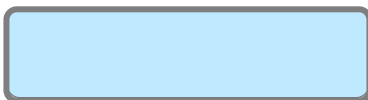
Test:

60Deg White

Date:

11/21/2018

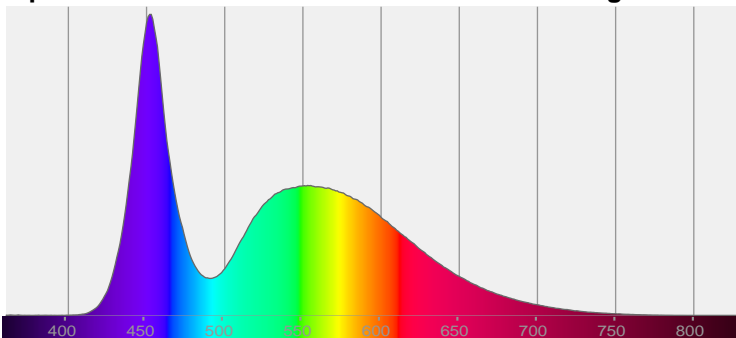
Note:



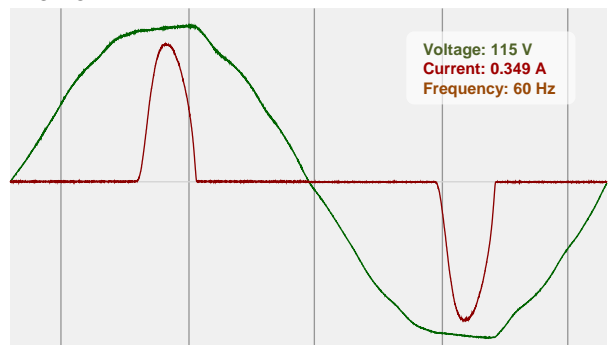
CIE 1931
x: 0.299
y: 0.305

Spectra

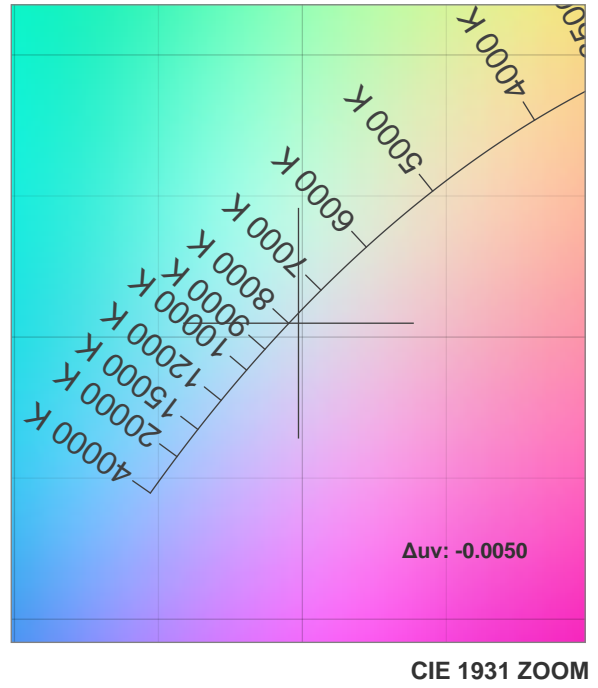
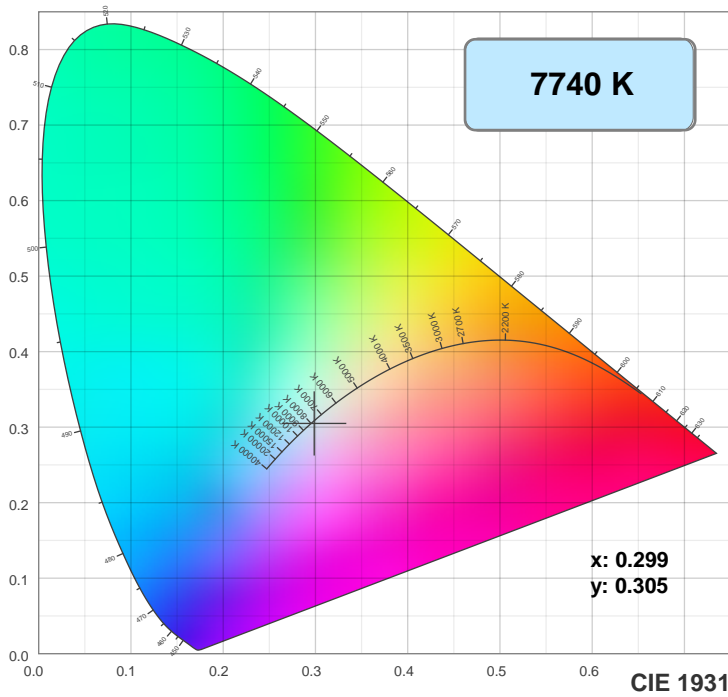
Dominant Wavelength: 462nm



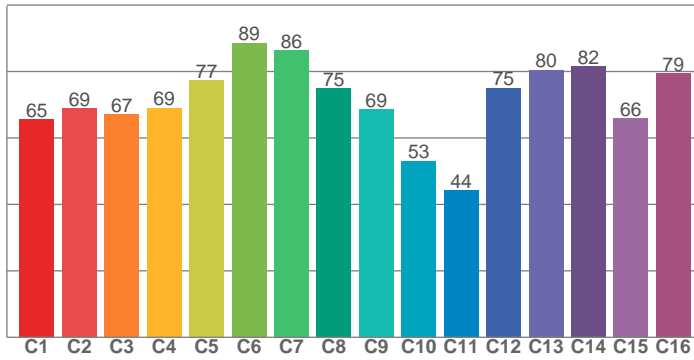
Power



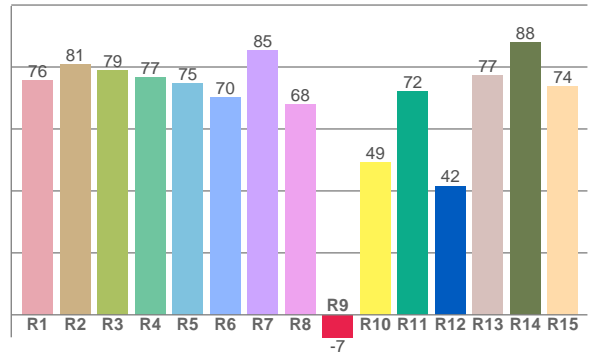
Color Details



TM30: 71.0



CRI: 76.4 (R1-R8)



CRI R values, only R1-R8 are used to calculate final CRI value

R1	R2	R3	R4	R5	R6	R7	R8	R9	R10	R11	R12	R13	R14	R15
75.7	80.9	79.0	76.7	74.8	70.3	85.5	68.0	-7.3	49.3	72.1	41.6	77.2	88.0	73.7

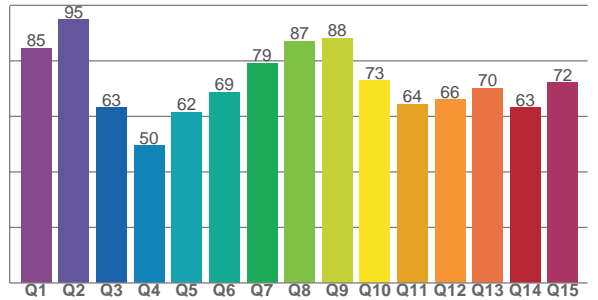
TM30 C values, 16 binned values out of total of 99 C values

C1	C2	C3	C4	C5	C6	C7	C8	C9	C10	C11	C12	C13	C14	C15	C16
65.5	68.8	67.1	69.1	77.3	88.6	86.4	74.9	68.6	53.1	44.1	75.0	80.4	81.5	65.9	79.4

CQS Q values

Q1	Q2	Q3	Q4	Q5	Q6	Q7	Q8	Q9	Q10	Q11	Q12	Q13	Q14	Q15
84.6	94.9	63.2	49.5	61.5	68.8	79.2	87.2	88.1	72.8	64.4	66.1	70.1	63.2	72.1

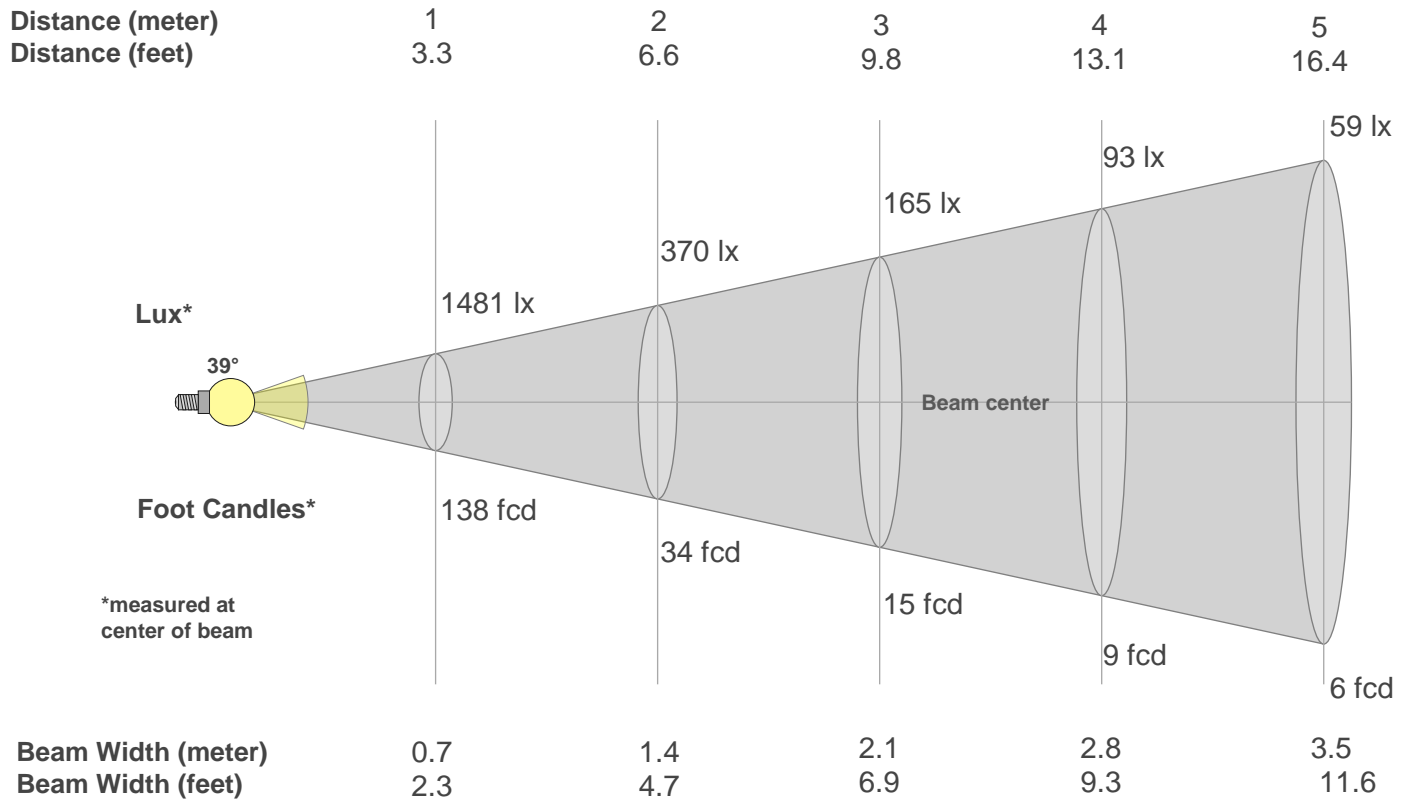
CQS: 69.9



Color Parameters

Color Temperature	Color Rendering Index	Red Component	Color Fidelity	Color Gamut	Color Quality Scale	Color Coordinate CIE 1931	Color Coordinate CIE 1931	Color Coordinate	Color Coordinate	Color Deviation from Black Body
CCT	CRI	CRI R9	TM30 Rf	TM30 Rg	CQS	x	y	u	v	Δuv
7740 K	76.4	-7.3	71.0	92.3	69.9	0.299	0.305	0.197	0.302	-0.0050

Beam Details



Beam Intensities from 1-20m

m	1	2	3	4	5	6	7	8	9	10	11	12	13	14	15	16	17	18	19	20
ft	3.3	6.6	9.8	13.1	16.4	19.7	23	26.2	29.5	32.8	36.1	39.4	42.7	45.9	49.2	52.5	55.8	59.1	62.3	65.6
lx	1481	370	165	93	59	41	30	23	18	15	12	10	9	8	7	6	5	5	4	4
fcd	137.6	34.4	15.3	8.6	5.5	3.8	2.8	2.1	1.7	1.4	1.1	1	0.8	0.7	0.6	0.5	0.5	0.4	0.4	0.3

Intensities in 0° C-plane

0°	2°	4°	6°	8°	10°	12°	14°	16°	18°	20°	22°	24°	26°	28°	30°	32°	34°	36°	38°
1481	1469	1435	1382	1310	1225	1129	1027	921	817	716	620	533	454	385	325	274	229	192	161
100%	99%	97%	93%	88%	83%	76%	69%	62%	55%	48%	42%	36%	31%	26%	22%	18%	15%	13%	11%

Intensities in 90° C-plane

0°	2°	4°	6°	8°	10°	12°	14°	16°	18°	20°	22°	24°	26°	28°	30°	32°	34°	36°	38°
1481	1469	1435	1382	1310	1225	1129	1027	921	817	716	620	533	454	385	325	274	229	192	161
100%	99%	97%	93%	88%	83%	76%	69%	62%	55%	48%	42%	36%	31%	26%	22%	18%	15%	13%	11%

Intensities in 180° C-plane

0°	2°	4°	6°	8°	10°	12°	14°	16°	18°	20°	22°	24°	26°	28°	30°	32°	34°	36°	38°
1481	1469	1436	1382	1311	1225	1130	1027	921	816	715	620	534	455	387	327	275	231	194	163
100%	99%	97%	93%	89%	83%	76%	69%	62%	55%	48%	42%	36%	31%	26%	22%	19%	16%	13%	11%

Intensities in 270° C-plane

0°	2°	4°	6°	8°	10°	12°	14°	16°	18°	20°	22°	24°	26°	28°	30°	32°	34°	36°	38°
1481	1469	1436	1382	1311	1225	1130	1027	921	816	715	620	534	455	387	327	275	231	194	163
100%	99%	97%	93%	89%	83%	76%	69%	62%	55%	48%	42%	36%	31%	26%	22%	19%	16%	13%	11%

Beam Angle 50%	Field Angle 10%	Cutoff Angle 2,5%	Intensity Ratio in 120° Cone	Intensity Ratio in 90° Cone
39°	78°	109°	98.7%	91.8%